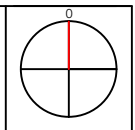
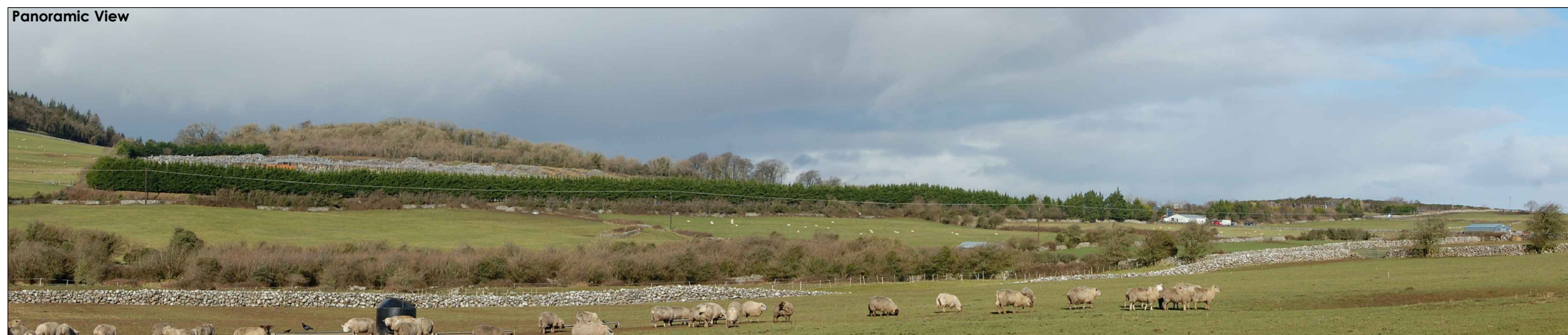


Location: Viewpoint 3
 Distance to Site Boundary: 936m
 Horizontal Angle of View: 90 Degrees



Panoramic View



Viewpoint 3 North from Ballaghbaun, Belclare.

View North from minor road in Ballaghbaun, across farmland opposite a residential property. Knockmaa Hill is a visual focal point, however the existing quarry operations(particularly the Northern faces of Mortimers Quarry) along with its incongruous Leylandii boundary hedging are clearly visible. There are no views relating to the unauthorised development works from this viewpoint.

Photo Viewpoint 3

Fig 9.5

Landscape & Visual Effects Viewpoint	Baseline Landscape & Visual Sensitivity	Magnitude (Unauthorized Elements)	Impacts Occurred (Jan 2015 to Jun 2019)	Impacts Occurring Jun 2019 to Present)	Expected to Occur (with Remediation/Restoration)
3	Medium - Low (Landscape) High (Visual)	Very Low Very Low	Negligible Minor	Negligible Negligible/None	Moderate (Beneficial) Minor (Beneficial)
client McTigues	date May. 21	scale NTS@A3	by pjm	notes Image represents an eyelevel impression of view at monocular distance of 30cm	

Cartron Quarry, Tuam, Co Galway